

STREET SWEEPERS



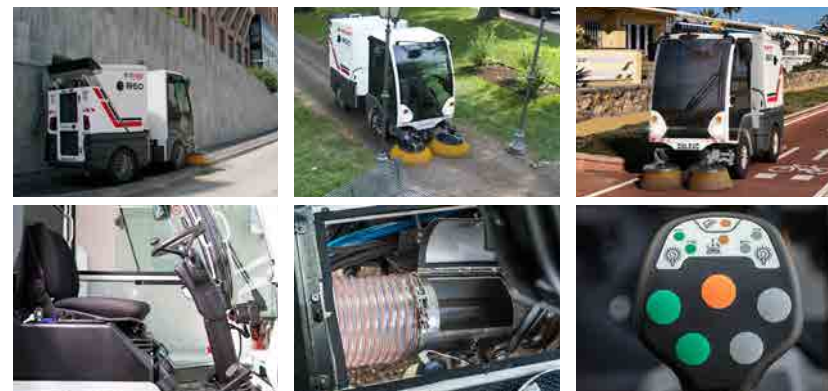
DULEVO
FAYAT GROUP

TIMELESS QUALITY THROUGH PASSION

850



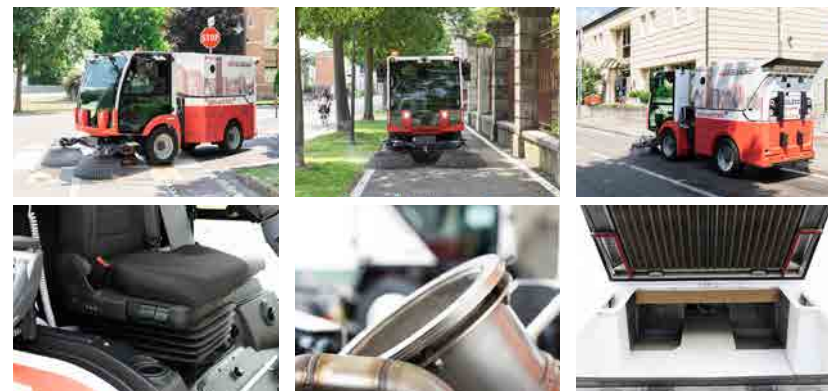
TECHNICAL DATA		850
Sweeping width:		
-Minimum	mm	1.500
-Maximum	mm	1.850
Grosse hopper capacity (Opt.)	m ³	0,80 (1,09)
Maximum dump height	mm	1.420
Cleaning performance	m ² /h	22.000
Maximum speed	Km/h	25-27
PM10 & PM 2.5 filtration - EN 15429-3		EUNITED 4 Star
Alimentation		Diesel



D.ZERO²



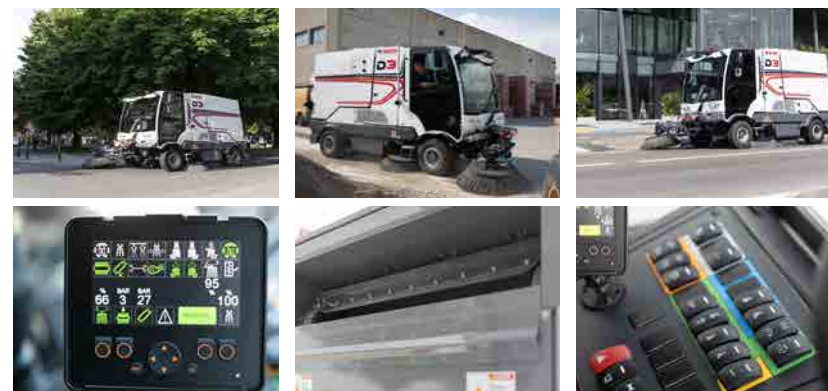
TECHNICAL DATA		D.zero ²
Sweeping width:		
-Minimum	mm	1.750
-Maximum	mm	3.200
-With third brush	mm	3.400
Grosse hopper capacity	m ³	2
Maximum dump height	mm	1.450
Cleaning performance	m ² /h	42.000
Maximum speed	Km/h	40
PM10 & PM 2.5 filtration - EN 15429-3		EUNITED 4 Star
Alimentation		Battery 75 KW



D3



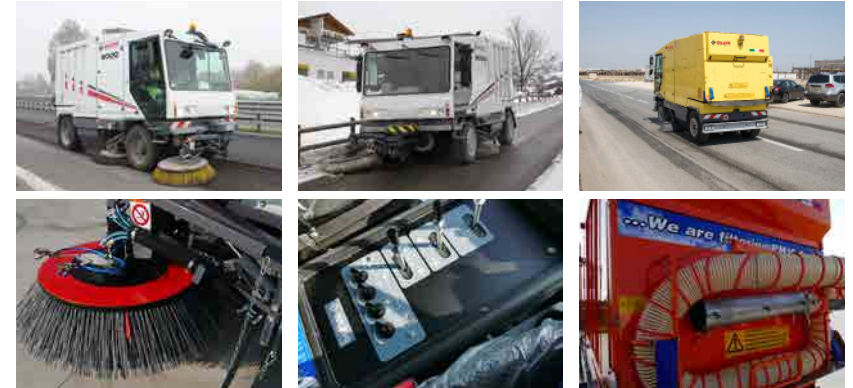
TECHNICAL DATA		D3
Sweeping width:		
-With central brush	mm	1.300
-With central brush and side brushes	mm	2.150
-With central, side and third brush	mm	3.200
Grosse hopper capacity	m ³	3,3
Maximum dump height (Opt.)	mm	1.570 (1.730)
Cleaning performance	m ² /h	90.000
Maximum speed	Km/h	25/40
PM10 & PM 2.5 filtration - EN 15429-3		EUNITED 4 Star
Alimentation		Diesel



5000 VELOCE



TECHNICAL DATA		5000 Veloce
Sweeping width :		
-With central brush	mm	1.300
-with right and left central brushes	mm	2.600
-With central, side and third brush	mm	3.500
Grosse hopper capacity	m³	5
Maximum dump height (Opt.)	mm	1.150 (2.300)
Cleaning performance	m²/h	105.000
Maximum speed	Km/h	70
PM10 & PM 2.5 filtration - EN 15429-3		EUNITED 4 Star
Alimentation		Diesel



6000



TECHNICAL DATA		6000
Sweeping width :		
-With central brush	mm	1.300
-with right and left central brushes	mm	2.800
-With central, side and third brush	mm	3.600
grosse hopper capacity	m³	6,2
Maximum dump height (Opt.)	mm	1.150 (2.400)
Cleaning performance	m²/h	108.000
Maximum speed	Km/h	25-40
PM10 & PM 2.5 filtration - EN 15429-3		EUNITED 4 Star
Alimentation		Diesel



D6



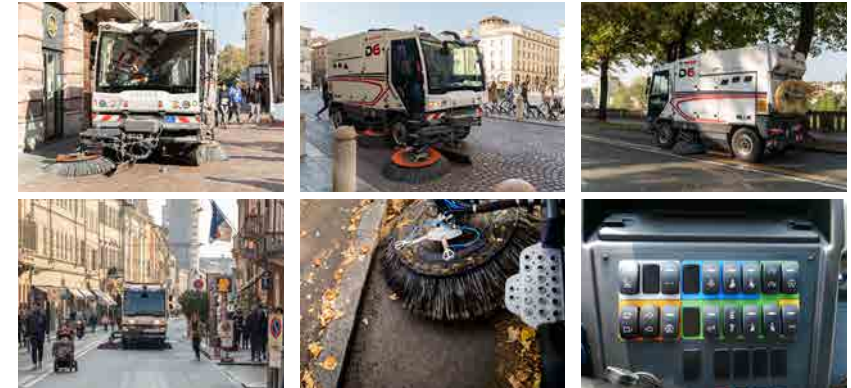
TECHNICAL DATA		D6
Sweeping width :		
-With central brush	mm	1.300
-with right and left central brushes	mm	2.800
-With central, side and third brush	mm	3.600
grosse hopper capacity	m³	6,2
Maximum dump height (Opt.)	mm	1.150 (2400)
Cleaning performance	m²/h	108.000
Maximum speed	Km/h	25-40
PM10 & PM 2.5 filtration - EN 15429-3		EUNITED 4 Star
Alimentation		Diesel



D6BLUE



TECHNICAL DATA		D6 Blue
Sweeping width :		
-With central brush	mm	1.300
-with right and left central brushes	mm	2.800
-With central, side and third brush	mm	3.600
Grosshopper capacity	m ³	4,8
Maximum dump height (Opt.)	mm	1.150 (2.400)
Cleaning performance	m ² /h	108.000
Maximum speed	Km/h	25-40
PM10 & PM 2.5 filtration - EN 15429-3		EUNITED 4 Star
Alimentation		CNG



DT7



TECHNICAL DATA		DT7
Sweeping width :		
-Minimum	mm	1.800
-Maximum	mm	3.200
-With third brush	mm	3.700
Gross Hopper capacity	m ³	6,8
Maximum dump height	mm	1.150
Cleaning performance	m ² /h	40.500
Maximum speed	Km/h	90
Filter		Hydro-mechanic
Alimentation		Diesel



QUALITY, INNOVATION AND RESPECT FOR THE ENVIRONMENT

Dulevo Certifications:

ISO 14001
ENVIRONMENTAL
SYSTEM
CERTIFICATION



ISO 9001
QUALITY
SYSTEM
CERTIFICATION



ISO 45001
SAFETY
SYSTEM
CERTIFICATION



EUnited PM TEST
COLLECTION AND
FILTRATION
DUST



Street washing

D.ZERO²HYDRO



TECHNICAL DATA		D.zero² Hydro
Minimum washing width	mm	1.800
Maximum washing width	mm	4.600
Water tank capacity	L	1.500
Solution tank capacity	L	18
Cleaning performance	m²/h	28.000
Maximum speed	Km/h	25
Alimentation		Battery



6000 HYDRO



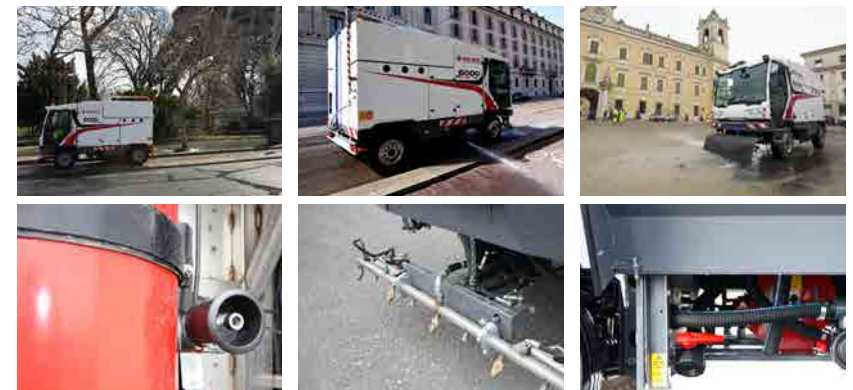
TECHNICAL DATA		6000 Hydro
Minimum washing width	mm	2.800
Maximum washing width	mm	3.200
Water tank capacity	L	5.900
Solution tank capacity	L	110
Cleaning performance	m²/h	32.000
Maximum speed	Km/h	25 / 40
Alimentation		Diesel



6000 HYDRO CNG



TECHNICAL DATA		6000 hydro CNG
Minimum washing width	mm	2.800
Maximum washing width	mm	3.200
Water tank capacity	L	4.400
Solution tank capacity	L	110
Cleaning performance	m²/h	32.000
Maximum speed	Km/h	25 / 40
Alimentation		GNC



Dulevo Fayat Group

Dulevo was founded in 1976 and is now part of the Fayat Group, France's largest privately-owned construction, industrial and road infrastructure group. The knowledge of cleaning technology acquired by Dulevo, based in Parma in the heart of Italy's Motor Valley, forms the basis of our state-of-the-art and reliable machines. Our motto, 'Timeless Quality through Passion', reflects our commitment to providing innovative, high quality cleaning solutions to municipalities and industry, with a focus on environmental care.



Specifications are not binding for our company and subject to change at any time without notice



DULEVO
FAYAT GROUP

Dulevo International S.p.A.
Via Giovannino Guareschi, 1
43012 Fontanellato (PR) Italia
Tel: +39-0521-827711
www.dulevo.com